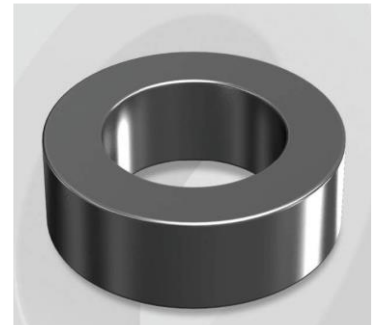


# CK610026G

## Electrical Characteristics

Material	Permeability ( $\mu$ )	AL $\pm$ 8% (nH/N <sup>2</sup> )	DCB (% min) @ 200 Oe	Coreloss (mW/cm <sup>2</sup> , max) @50kHz, 100G
Mega Flux	26	83	64.4	6.6

OD : 610



## Core Dimensions

Dimensions		Uncoated		Coated		Color	Packaging
		(mm)	(inch)	(mm)	(inch)		
OD	(Max)	62.00	2.441	63.10	2.484	Black	Box Qty = 24 pcs
ID	(min)	32.60	1.283	31.37	1.235		
HT	(max)	25.00	0.984	26.27	1.034		

## Physical Characteristics

Cross Section (A)	Path Length ( $\ell$ )	Window Area (Wa)	Volume (V)	Breakdown Voltage (Vac)
3.675 cm <sup>2</sup>	14.37 cm	7.73 cm <sup>2</sup>	52.810 cm <sup>3</sup>	1,000
0.570 in <sup>2</sup>	5.657 in	1,525,558 cmil	3.2225 in <sup>3</sup>	

## Winding Information

0% Winding length/turn (cm)		
8.427		
40% winding factor Surface Area (cm <sup>2</sup> )		
173.99		
40% Wound Di.(mm)		
OD	ID	HT
70.78	20.54	35.53

## Typical DC Bias Performance

